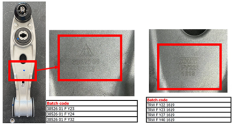

Alert number SR/01911/25



Notifying country Germany

Product category Motor vehicles

Type Consumer

Product Vehicle part / Control arm

Name LEMFÖRDER: 38526 01; TRW: JTC1619

Brand ZF Friedrichshafen AG

Production dates 07.06.2024 - 05.03.2025

Product description Vehicle part: track control arm.

Risk type Injuries

Risk description Due to a production error, the connector inner sleeve of the recalled control arms, when fitted, may leave a gap which could permit further compression of the component during tightening. This can lead to stress in the subframe and cause cracking. A crack or microcrack in the subframe can result in damage to the front axle beam, which can impair driving and increase the risk of an accident and injury.

Legal provisions (at EU level) and European standards against which the product was tested and did not comply The product does not comply with the Regulation on the approval and market surveillance of motor vehicles and their trailers, and of systems, components and separate technical units intended for such vehicles.

Country of origin Malaysia

Measures taken by economic operators Recall of the product from end users
Manufacturer